

# **Somerset JSNA 2020: Climate Change and Health**

Pip Tucker, Public Health Specialist,  
Somerset County Council

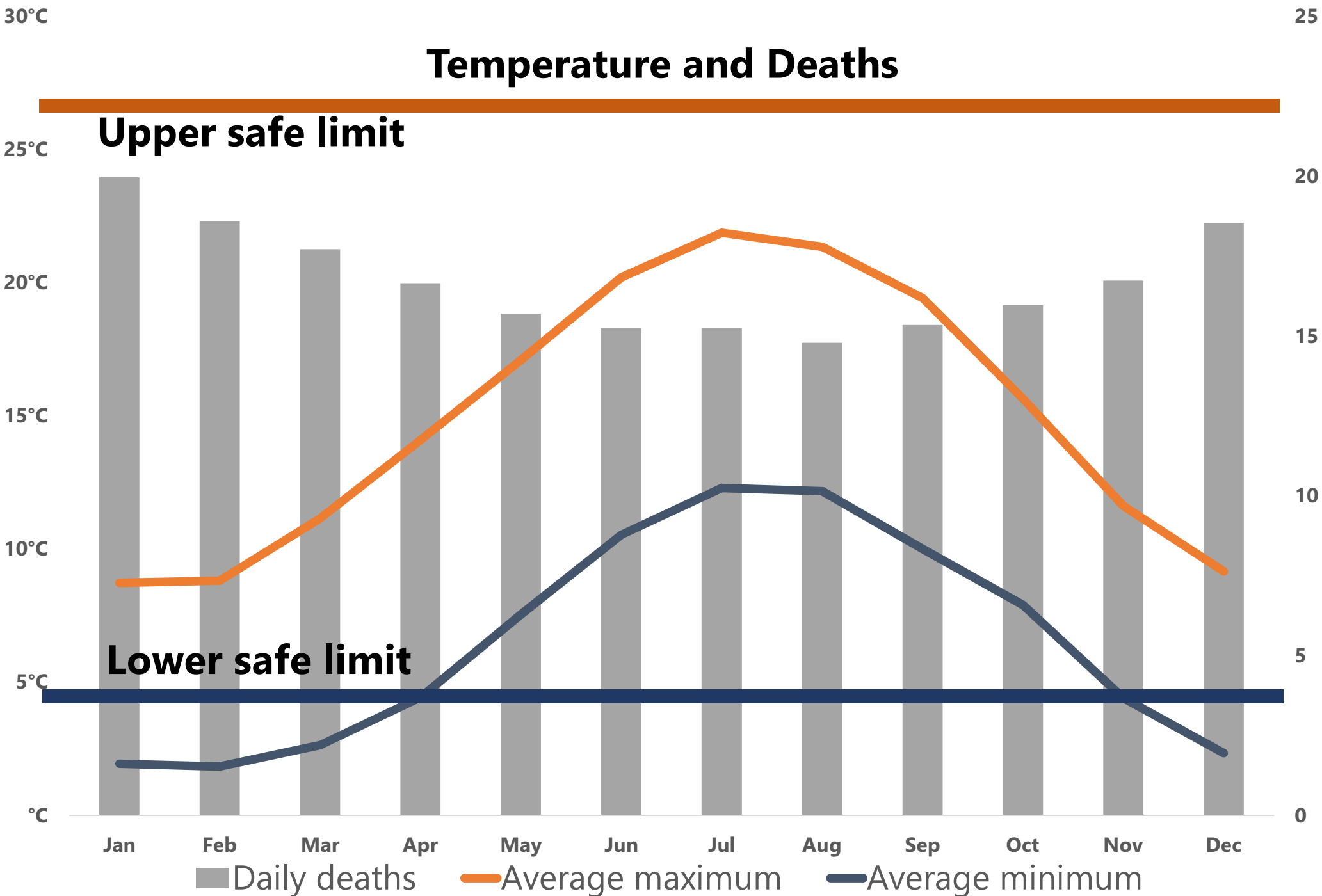
## • **Impacts**

- High temperatures
- Flooding

## • **Mitigation**

- housing

# Temperature and Deaths

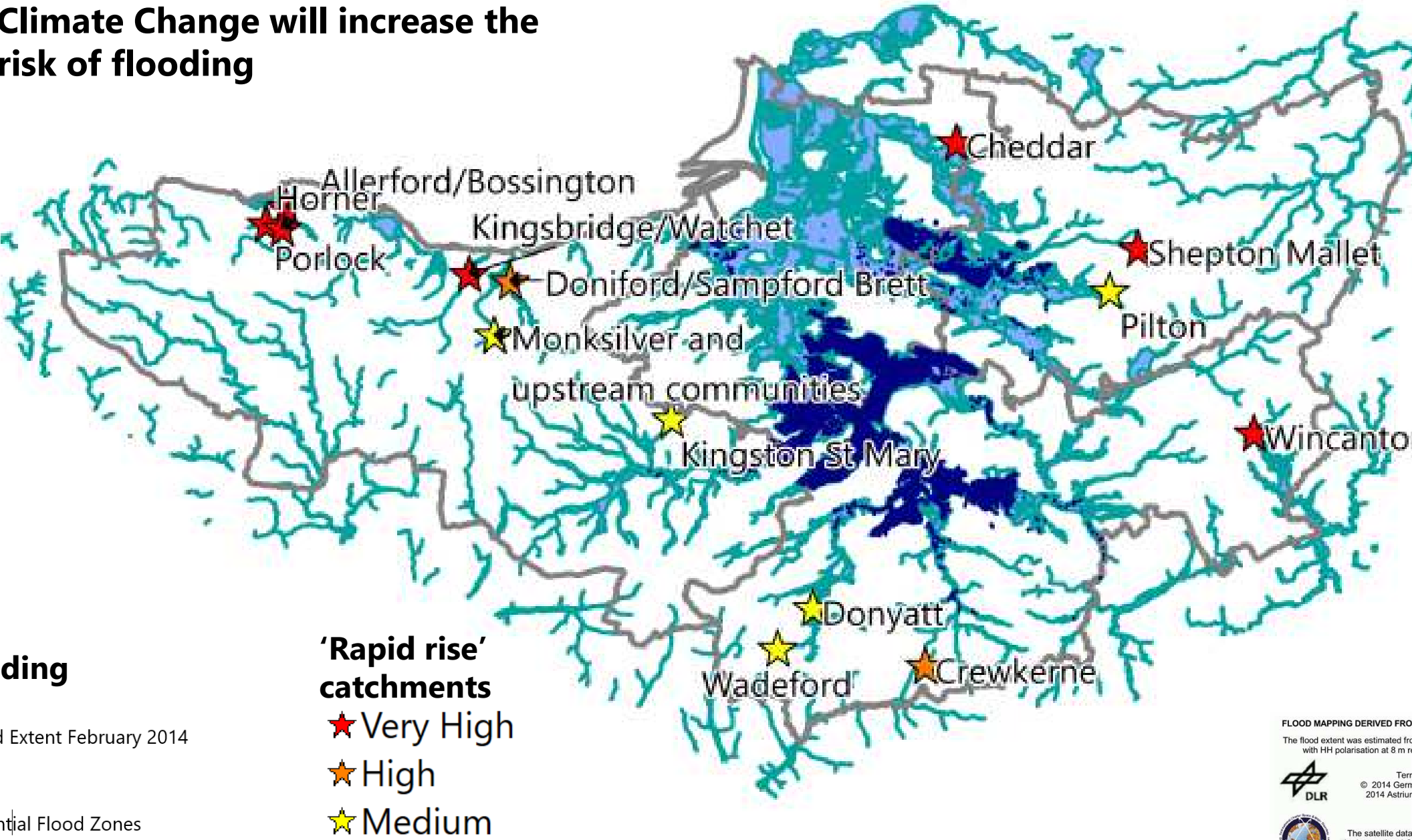


# Depression, anxiety and PTSD



<https://vimeo.com/167347918>

# Climate Change will increase the risk of flooding



ding

Extent February 2014

ntial Flood Zones

**'Rapid rise'**  
catchments

- ★ Very High
- ★ High
- ★ Medium

Existing  
back and  
new  
build

Poverty  
Heating  
Physical inactivity  
Risk  
ion



Housing

## • **Impacts**

- Flash flooding is probably the most significant.

## • **Mitigation**

- There are significant overlaps between climate mitigations and public health.